



Wireless Network Adapter 54g  
-Generic Manual-

**Quick Installation Guide**

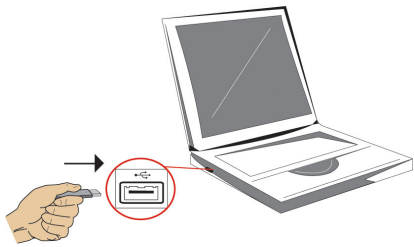
*For Windows Vista*

# 1. Installation (Windows Vista)

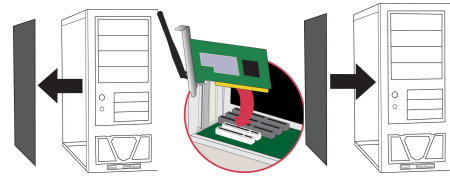
Please insert the Wireless Network Adapter into a free USB port, PCI or Cardbus slot (depending on your model) before installing the driver!

**Note:** Depending on your Windows settings, you might see Windows Vista 'User Account Control' windows asking for permission to use elevated user rights during the installation.

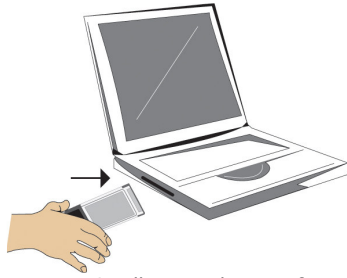
Click 'continue' when you see such a message. Without administrator rights or Elevated User Rights you might not be able to install your Wireless Network Adapter.



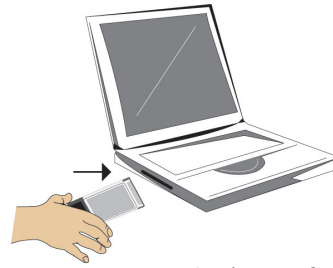
Insert a USB dongle into a free USB port.



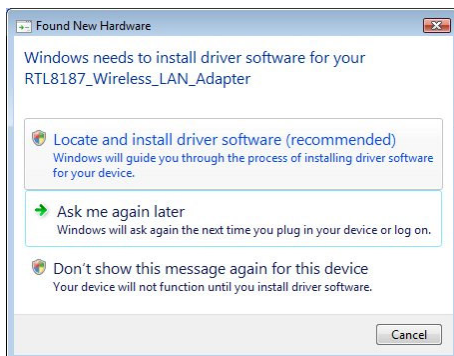
Insert a PCI adapter into a free PCI slot.



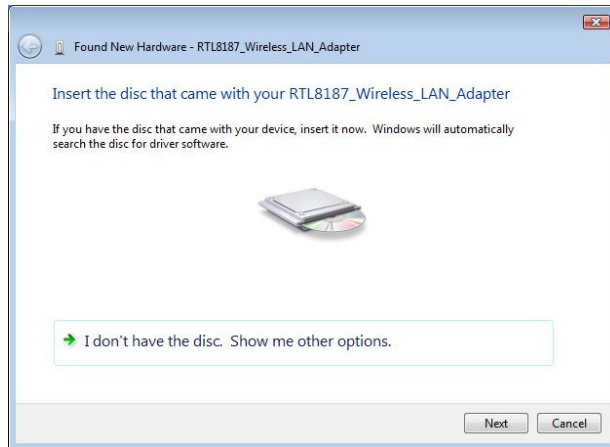
Insert a Cardbus card into a free Cardbus slot.



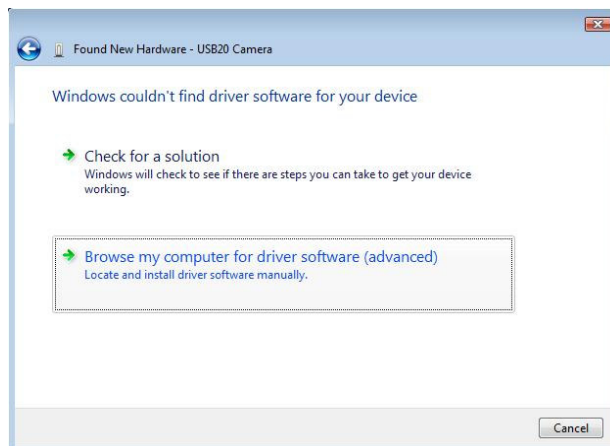
Insert an ExpressCard into a free Expresscard slot.



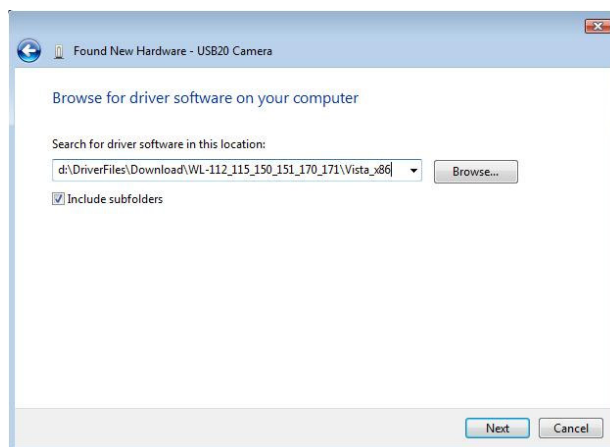
- Windows will show the 'Found New Hardware' window. Click '**Locate and install driver software (recommended)**'. Windows will attempt to locate the drivers. (the model number displayed here depends on the type and model of your adapter.)



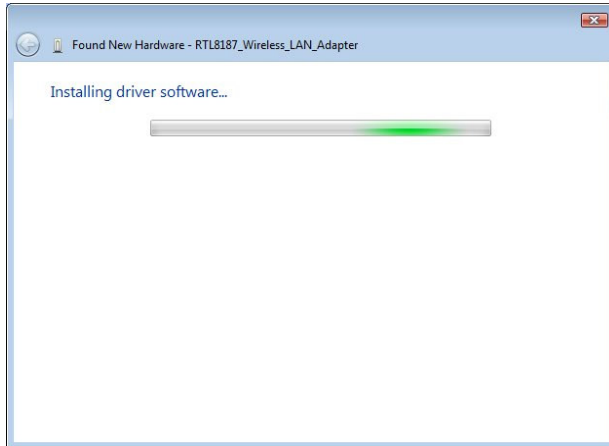
- Windows Vista will ask to insert the CDROM that came with the Wireless Network Adapter. Click '**I don't have the disc. Show me other options**'.



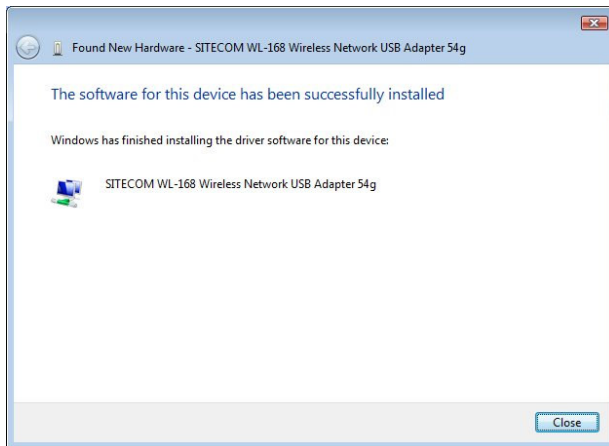
- Click on '**Browse my computer for driver software (advanced)**'.



- Use the '**Browse**' button to navigate to the folder where you've unpacked your drivers. You can also enter the location manually.
- Click '**Next**' to continue.



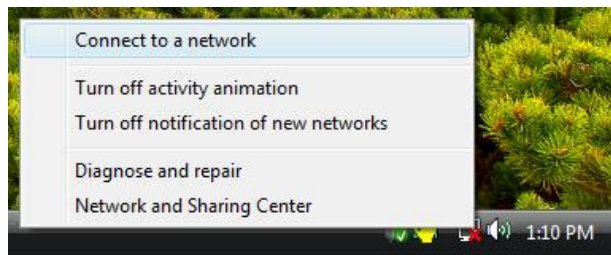
- Windows will search the folder you've selected for the correct drivers, and install these.



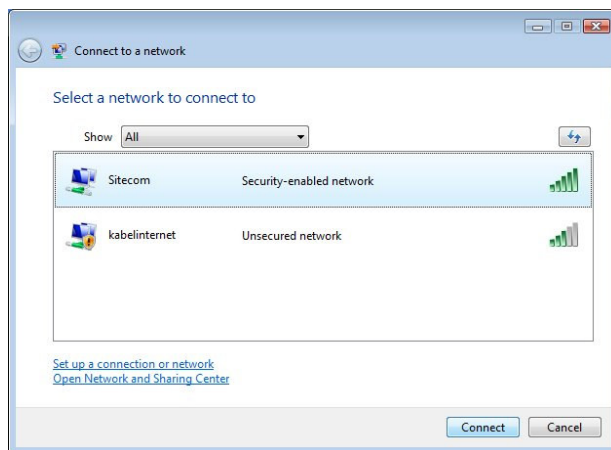
- Click 'Close' to finish the installation of the Wireless Network Adapter driver.  
*(the model number displayed here depends on the type and model of your adapter.)*

## 2. Connect to your Network (Windows Vista)

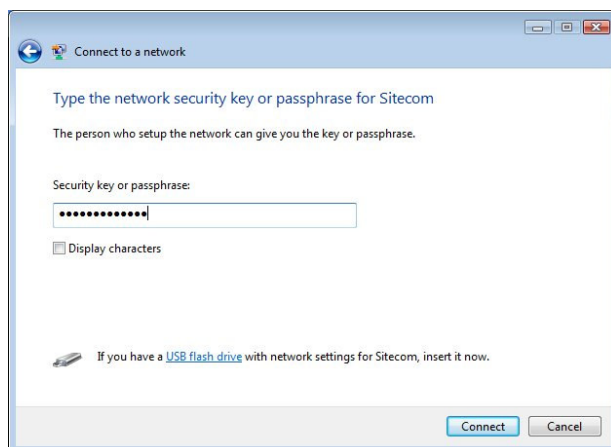
---



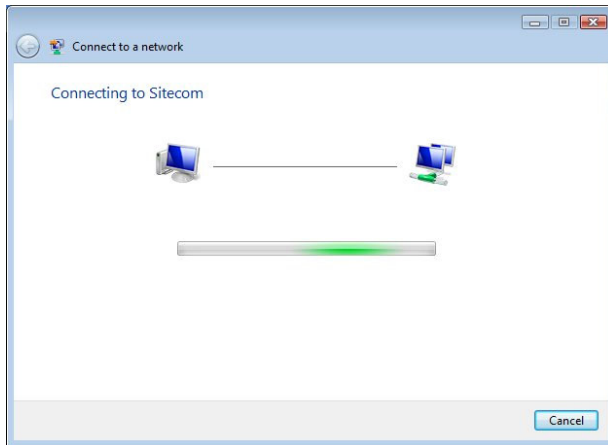
- To connect to your wireless network, right mouse-click on the icon of your network connection. Select 'Connect to a network'.



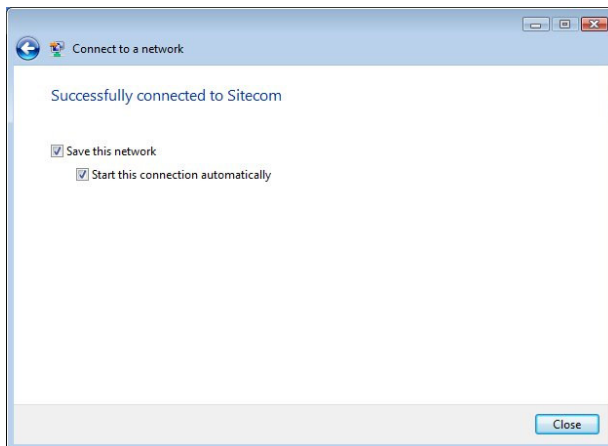
- Select your network, and click the 'Connect' button.



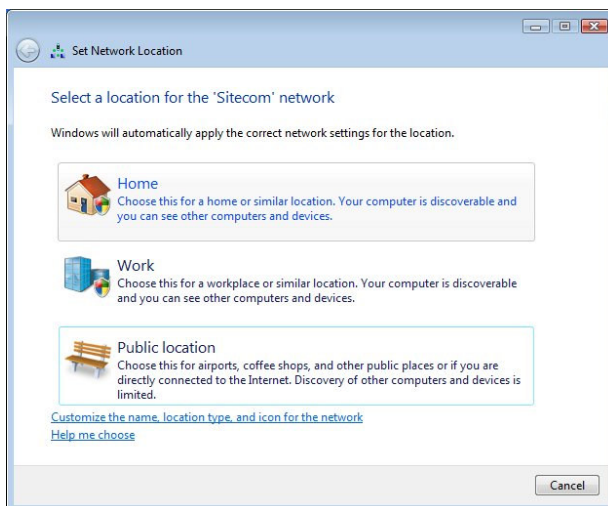
- If your network uses WEP or WPA encryption, please enter your security key or passphrase. Click 'Connect' when you've finished entering your key. (note: this window will not show when encryption is disabled on your AP or router.)



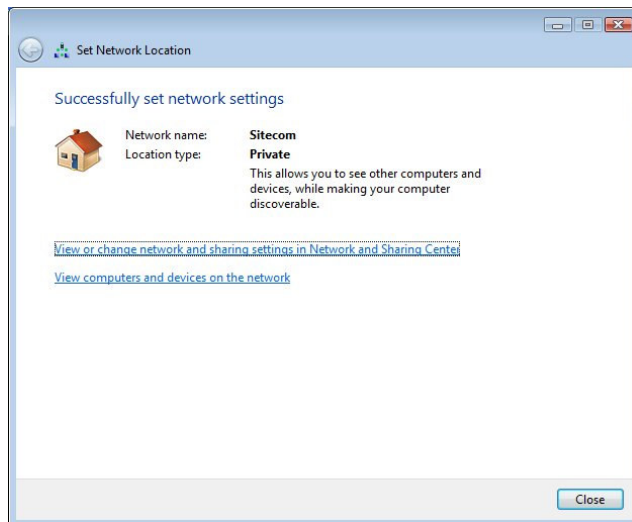
- Windows will attempt to connect to your network, and request an IP address. Please wait for the connection to be established.



- Once the connection has been established, choose whether or not you want to save these settings and if you want to automatically connect to this network once it is in range. Click Close to close this window and save your settings.



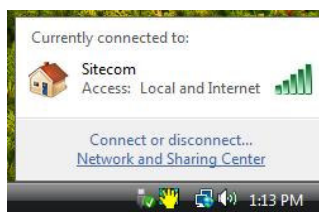
- When you first connect to a network, Windows Vista will ask to choose a location. Choose the location/description that best fits your environment.



- Here, you can choose to view the advanced network settings. Click '**close**' to finish the network configuration wizard.

## ***Finished***

Your computer should now be able to connect to your network and the internet.



If you want to change your network settings in Windows, click the network icon once. Windows Vista will show the network you're currently connected to, and the option to view the Network And Sharing Center.